



**GHANA STATISTICAL SERVICE (GSS)**  
*Statistics for Development and Progress*

Statistical Bulletin

**(PRODUCER PRICE INDEX PPI)**  
**November, 2019**

Ghana Statistical Service (GSS)

**Statistical Bulletin**

PRODUCER PRICE INDEX (PPI)  
**November, 2019**

**Date: December 18, 2019**

**Producer Price Index (PPI)**  
**NOVEMBER 2019**

CONTENTS

<b>HIGHLIGHTS FOR NOVEMBER 2019</b>	2
Table 1: Producer Price Index for November 2018 - November 2019	4
Table 2: Producer Price Index (Sep.2006=100) by sectors for November 2018 - November 2019	5
Table 3: Producer Price Index: Yearly Change Rates by Sector for November 2018 - November 2019 (%)	6
Table 4: Producer Price Index: Monthly Change Rates by Sector for November 2018 - November 2019 (%)	7
Table 5: Mining And Quarrying: Producer Price Index (Sept 2006=100) November 2018 - November 2019	8
Table 6: Mining and Quarrying: Yearly Change Rates for November 2018 - November 2019 (%)	9
Table 7: Mining and Quarrying: Monthly Change Rates for November 2018 - November 2019 (%)	10
Table 8: Manufacturing Producer Price Index (Sept 2006=100) for November 2018 - November 2019	11
Table 9: Manufacturing: Yearly Change Rates for November 2018 - November 2019 (%)	17
Table 10: Manufacturing: Monthly Change Rates for November 2018 - November 2019 (%)	23
Table 11: Utilities: Producer Price Index (Sept 2006=100) for November 2018 - November 2019	28
Table 12: Utilities: Yearly Change Rates for November 2018 - November 2019 (%)	29
Table 13: Utilities: Monthly Change Rates for November 2018 - November 2019 (%)	30

## HIGHLIGHTS FOR NOVEMBER 2019

### Producer Price Inflation Rate in November 2019 is 9.9%

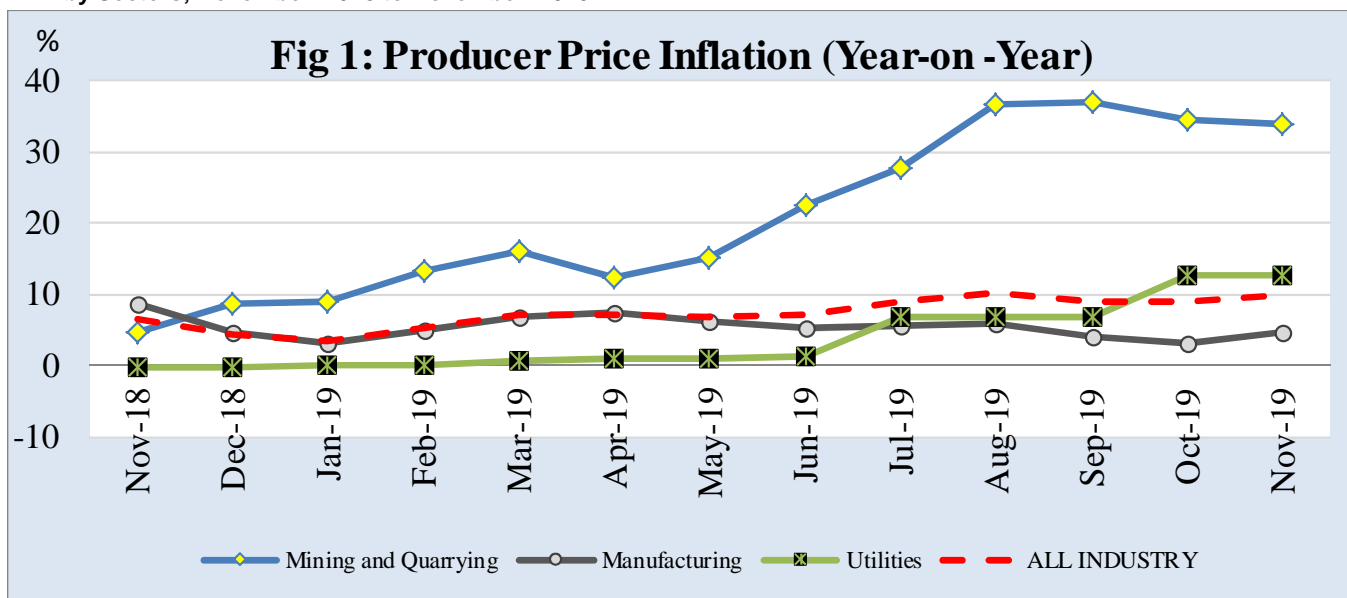
The Producer Price Index (PPI) measures the average change over time in the prices received by domestic producers for the production of their goods and services. The PPI for Ghana reports the producer price indices with reference to September 2006, the base period. This release shows the annual (year-on-year) and monthly producer inflation rates for all industry and three major sub-sectors of industry (Mining and Quarrying, Manufacturing and Utilities) for the last twelve months. The figures for the month of November 2019 are provisional, and are subject to revision when additional data become available. All other indicators are final.

The Producer Price Inflation rate for November 2019 was 9.9 percent. This rate indicates that between November 2018 and November 2019 (year-on-year), the PPI increased by 9.9 percent. This rate represents a 1.0 percentage point increase in producer inflation relative to the rate recorded in October 2019 (8.9%). The month-on-month change in producer price index between October 2019 and November 2019 was 0.3 percent

The producer price inflation in the Mining and Quarrying sub-sector decreased by 0.5 percentage points over the October 2019 rate of 34.4 percent to record 33.9 percent in November 2019. The producer inflation for Manufacturing which constitutes more than two-thirds of total industry increased by 1.4 percentage points to record 4.5 percent. The utilities sub-sector recorded inflation rate of 12.7 percent for November 2019 indicating a slight increase of 0.1 percentage point over the October 2019 rate of 12.6 percent.

During the month of November 2019, eight out of the sixteen major groups in the manufacturing sub-sector recorded inflation rates higher than the sector average of 4.5 percent. Manufacture of machinery and equipment n.e.c. recorded the highest inflation rate of 24.7 percent, while Manufacture of coke, refined petroleum products and nuclear fuel recorded the least inflation rate of -1.7 percent

#### PPI by Sectors; November 2018 to November 2019



**Manufacture of coke, refined petroleum products etc:** Annual rate was -1.7 percent for November 2019, as compare to -5.7 percent in October 2019.

**Manufacture of other non-metallic mineral product:** Annual rate was 10.1 percent for November 2019, as compared to 10.0 percent in October 2019.

**Manufacture of chemicals and other chemical products:** Annual rate was 5.7 percent in October 2019 and remained unchanged in November 2019.

**Electricity and Water Supply:** the inflation rate was 12.7 percent in October 2019 compared to 12.6 percent last month.

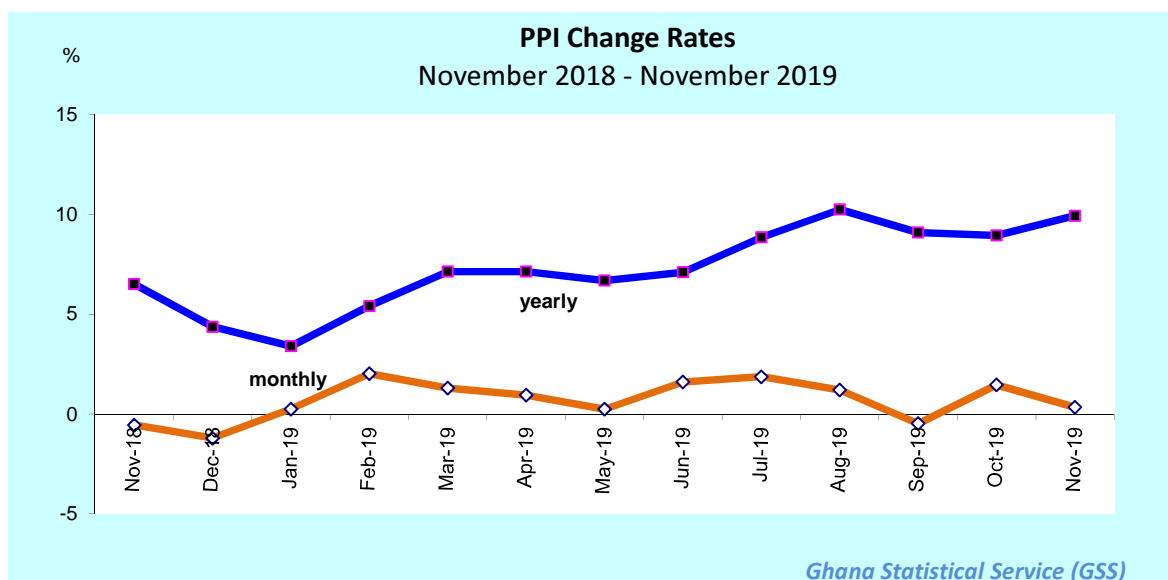
More detailed time series data is posted on the GSS website [[www.statsghana.gov.gh](http://www.statsghana.gov.gh)].

**The next release date is 22nd January 2019**

**Table 1: Producer Price Index for November 2018 - November 2019**

Year / Month	Index level	Monthly	Yearly
	Sept 2006=100	Change Rate (%)	
November-18	606.6	-0.6	6.5
December-18	599.3	-1.2	4.4
January-19	600.8	0.3	3.4
February-19	612.9	2.0	5.4
March-19	620.9	1.3	7.1
April-19	626.7	0.9	7.1
May-19	628.2	0.2	6.7
June-19	638.3	1.6	7.1
July-19	650.3	1.9	8.8
August-19	658.1	1.2	10.2
September-19	655.0	-0.5	9.1
October-19	664.5	1.5	8.9
November-19	p 666.8	p 0.3	p 9.9

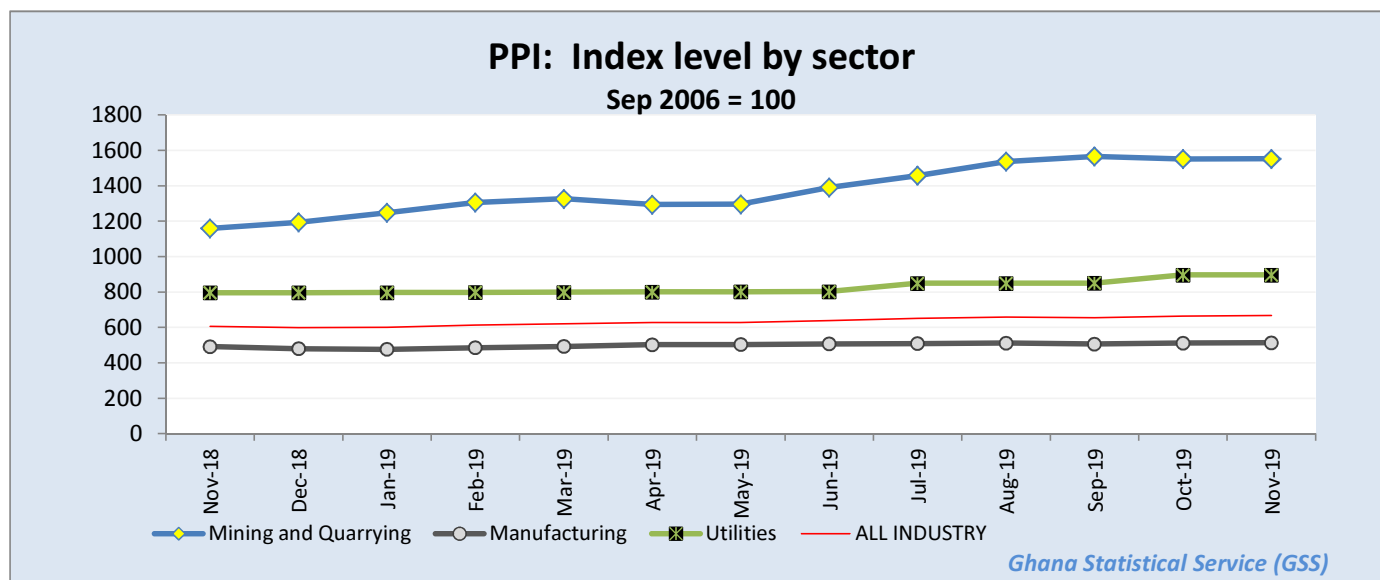
p: provisional



**Table 2: Producer Price Index (Sep.2006=100) by sectors for November 2018 - November 2019**

Year / Month	Mining and Quarrying	Manufacturing	Utilities	ALL INDUSTRY
<i>ISIC</i>	<i>C</i>	<i>D</i>	<i>E</i>	<i>C+D+E</i>
<i>weight</i>	13.97	69.75	16.28	100.00
November-2018	1,159.3	491.4	796.0	606.6
December-2018	1,193.4	479.6	796.2	599.3
January-2019	1,247.7	476.4	796.9	600.8
February-2019	1,305.4	485.4	797.9	612.9
March-2019	1,326.6	492.7	799.1	620.9
April-2019	1,294.1	502.0	801.0	626.7
May-2019	1,296.2	503.6	801.2	628.2
June-2019	1,390.3	507.2	802.2	638.3
July-2019	1,457.5	508.7	849.6	650.3
August-2019	1,537.0	511.5	849.7	658.1
September-2019	1,565.9	505.7	850.0	655.0
October-2019	1,551.8	511.2	896.0	664.5
November-2019	p 1,552.0	p 513.7	p 896.5	p 666.8

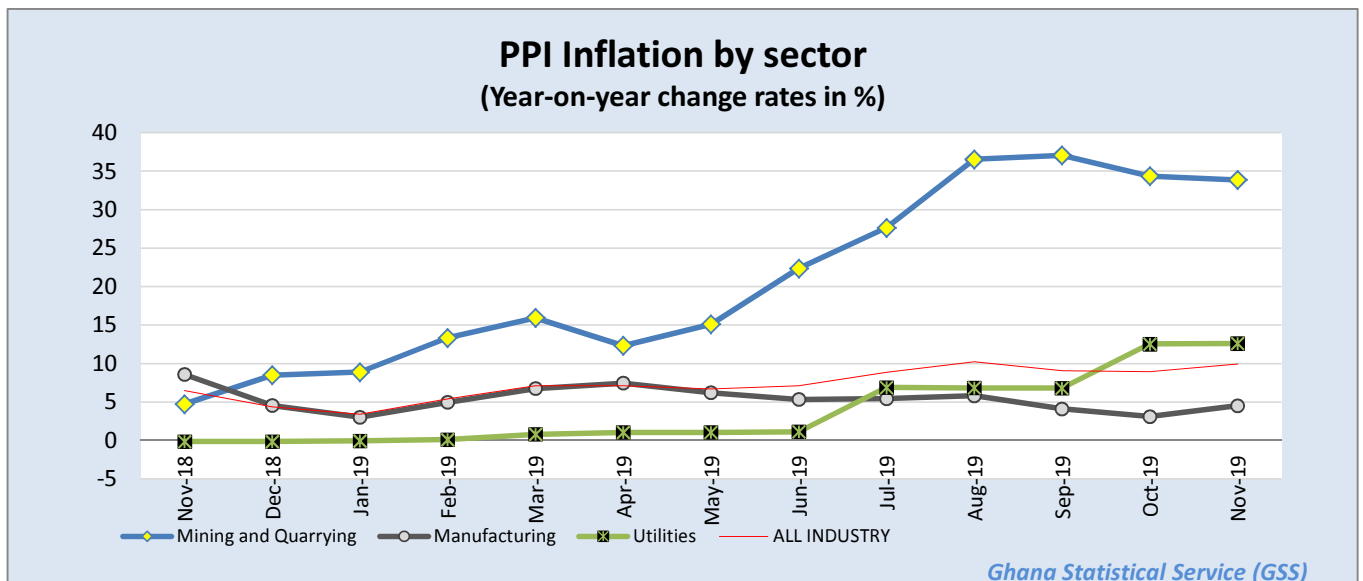
*p: provisional*



**Table 3: Producer Price Index: Yearly Change Rates by Sector for November 2018 - November 2019 (%)**

Year / Month	Mining and Quarrying	Manufacturing	Utilities	ALL INDUSTRY
	<i>C</i>	<i>D</i>	<i>E</i>	<i>C+D+E</i>
November-2018	4.7	8.6	-0.1	6.5
December-2018	8.5	4.5	-0.1	4.4
January-2019	8.9	3.0	-0.0	3.4
February-2019	13.3	5.0	0.1	5.4
March-2019	15.9	6.8	0.8	7.1
April-2019	12.3	7.5	1.0	7.1
May-2019	15.1	6.2	1.1	6.7
June-2019	22.4	5.3	1.1	7.1
July-2019	27.6	5.4	6.9	8.8
August-2019	36.5	5.8	6.8	10.2
September-2019	37.1	4.1	6.8	9.1
October-2019	34.4	3.1	12.6	8.9
November-2019	p 33.9	p 4.5	p 12.6	p 9.9

*p: provisional*

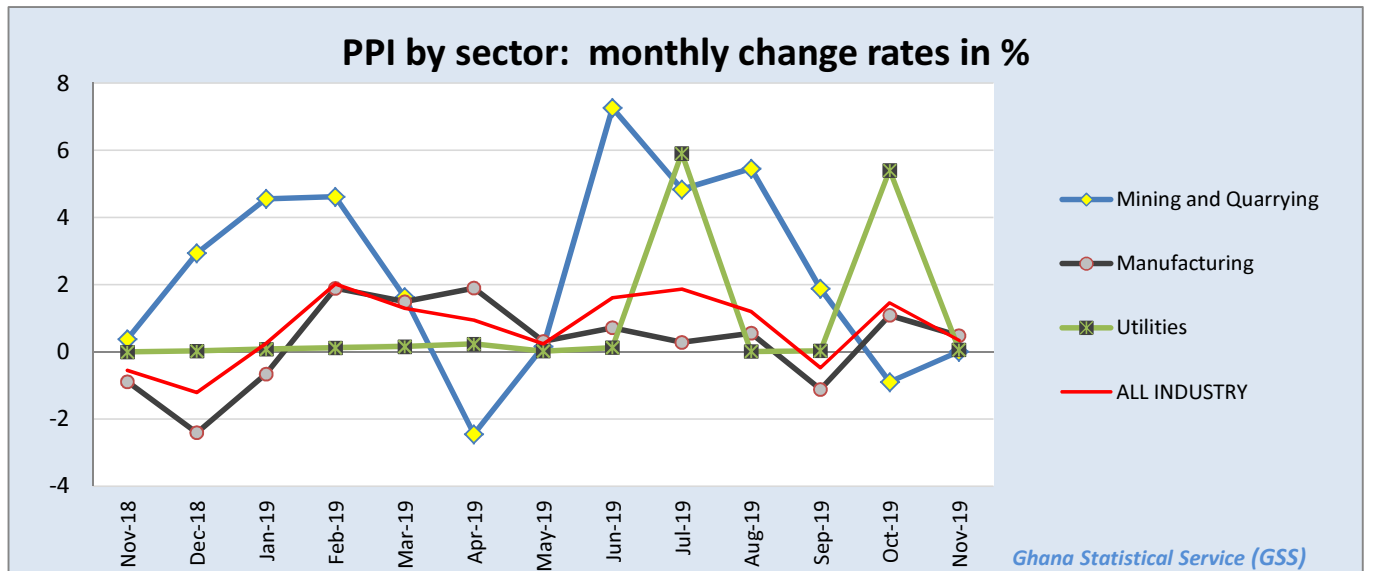




**Table 4: Producer Price Index: Monthly Change Rates by Sector for November 2018 - November 2019 (%)**

Year / Month	Mining and Quarrying	Manufacturing	Utilities	ALL INDUSTRY
<i>ISIC</i>	<i>C</i>	<i>D</i>	<i>E</i>	<i>C+D+E</i>
<i>weight</i>	13.97	69.75	16.28	100.00
November-2018	0.4	-0.9	-0.0	-0.6
December-2018	2.9	-2.4	0.0	-1.2
January-2019	4.6	-0.7	0.1	0.3
February-2019	4.6	1.9	0.1	2.0
March-2019	1.6	1.5	0.2	1.3
April-2019	-2.5	1.9	0.2	0.9
May-2019	0.2	0.3	0.0	0.2
June-2019	7.3	0.7	0.1	1.6
July-2019	4.8	0.3	5.9	1.9
August-2019	5.5	0.6	0.0	1.2
September-2019	1.9	-1.1	0.0	-0.5
October-2019	-0.9	1.1	5.4	1.5
November-2019	p 0.0	p 0.5	p 0.1	p 0.3

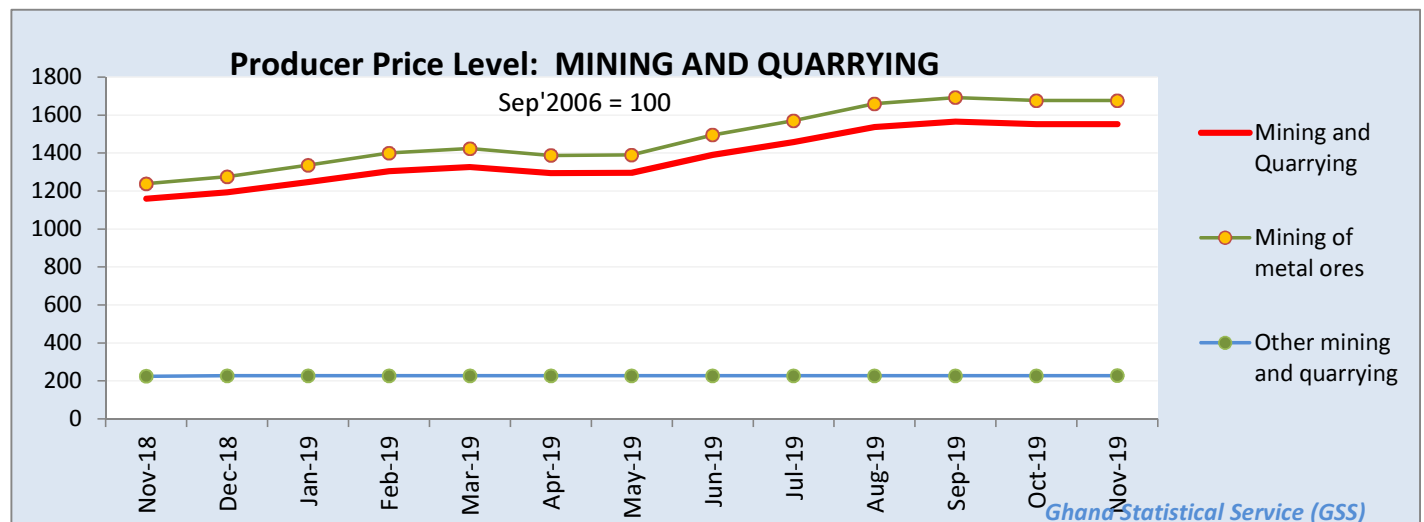
*p: provisional*



**Table 5: Mining And Quarrying: Producer Price Index (Sept 2006=100) November 2018 - November 2019**

Year / Month	Mining and Quarrying	Mining of metal ores	Mining of non-ferrous metal ores	Other mining and quarrying	Quarrying of stone, sand & clay	Mining and quarrying n.e.c.
ISIC	C	C13	C132	C14	C141	C142
November-2018	1159.3	1238.2	1238.2	224.7	183.8	494.9
December-2018	1193.4	1275.6	1275.6	226.9	183.8	519.3
January-2019	1247.7	1336.1	1336.1	226.9	183.8	519.3
February-2019	1305.4	1400.4	1400.4	226.9	183.8	519.3
March-2019	1326.6	1424.1	1424.1	226.9	183.8	519.3
April-2019	1294.1	1387.8	1387.8	226.9	183.8	519.3
May-2019	1296.2	1390.1	1390.1	226.9	183.8	519.3
June-2019	1390.3	1495.2	1495.2	226.9	183.8	519.3
July-2019	1457.5	1570.5	1570.5	226.9	183.8	519.3
August-2019	1537.0	1659.8	1659.8	226.9	183.8	519.3
September-2019	1565.9	1692.2	1692.2	226.9	183.8	519.3
October-2019	1551.8	1676.4	1676.4	226.9	183.8	519.3
November-2019	p 1552.0	p 1676.4	p 1676.4	p 227.5	p 184.4	p 519.3

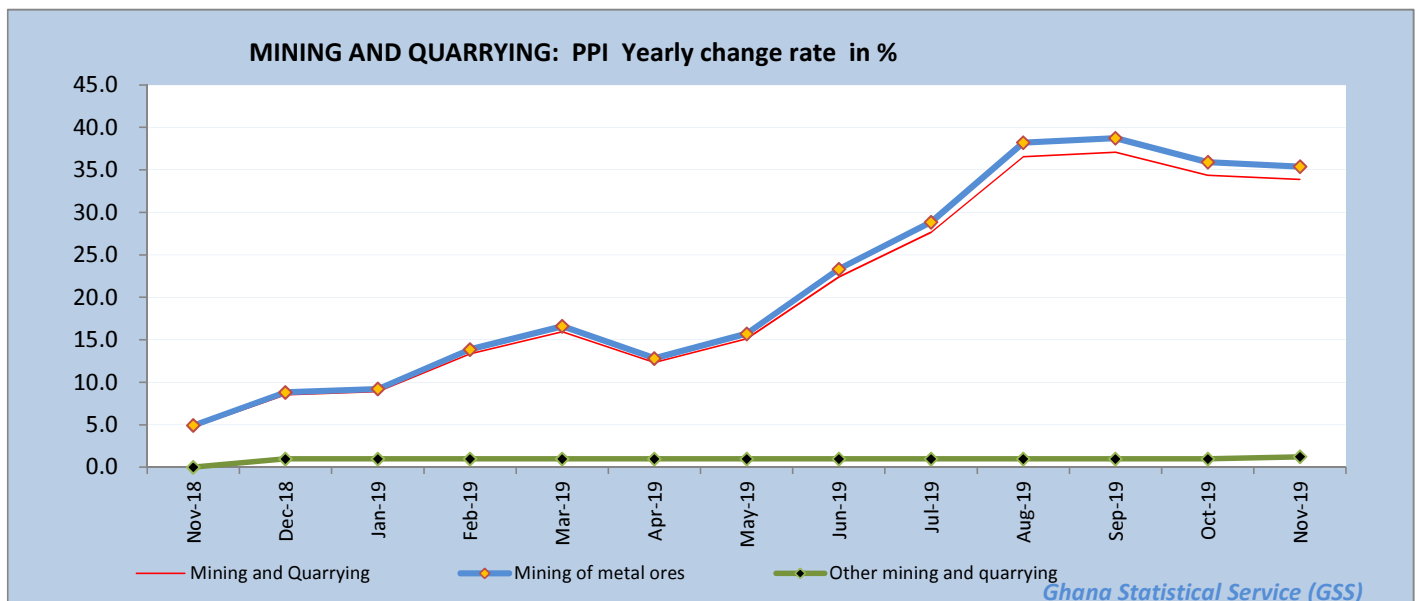
p: provisional



**Table 6: Mining and Quarrying: Yearly Change Rates for November 2018 - November 2019 (%)**

Year / Month	Mining and Quarrying	Mining of metal ores	Mining of non-ferrous metal ores	Other mining and quarrying	Quarrying of stone, sand & clay	Mining and quarrying n.e.c.
ISIC	C	C13	C132	C14	C141	C142
November-2018	4.7	4.9	4.9	0.0	0.0	0.0
December-2018	8.5	8.8	8.8	1.0	0.0	4.9
January-2019	8.9	9.2	9.2	1.0	0.0	4.9
February-2019	13.3	13.9	13.9	1.0	0.0	4.9
March-2019	15.9	16.6	16.6	1.0	0.0	4.9
April-2019	12.3	12.8	12.8	1.0	0.0	4.9
May-2019	15.1	15.7	15.7	1.0	0.0	4.9
June-2019	22.4	23.3	23.3	1.0	0.0	4.9
July-2019	27.6	28.9	28.9	1.0	0.0	4.9
August-2019	36.5	38.2	38.2	1.0	0.0	4.9
September-2019	37.1	38.8	38.8	1.0	0.0	4.9
October-2019	34.4	35.9	35.9	1.0	0.0	4.9
November-2019	p 33.9	p 35.4	p 35.4	p 1.2	p 0.3	p 4.9

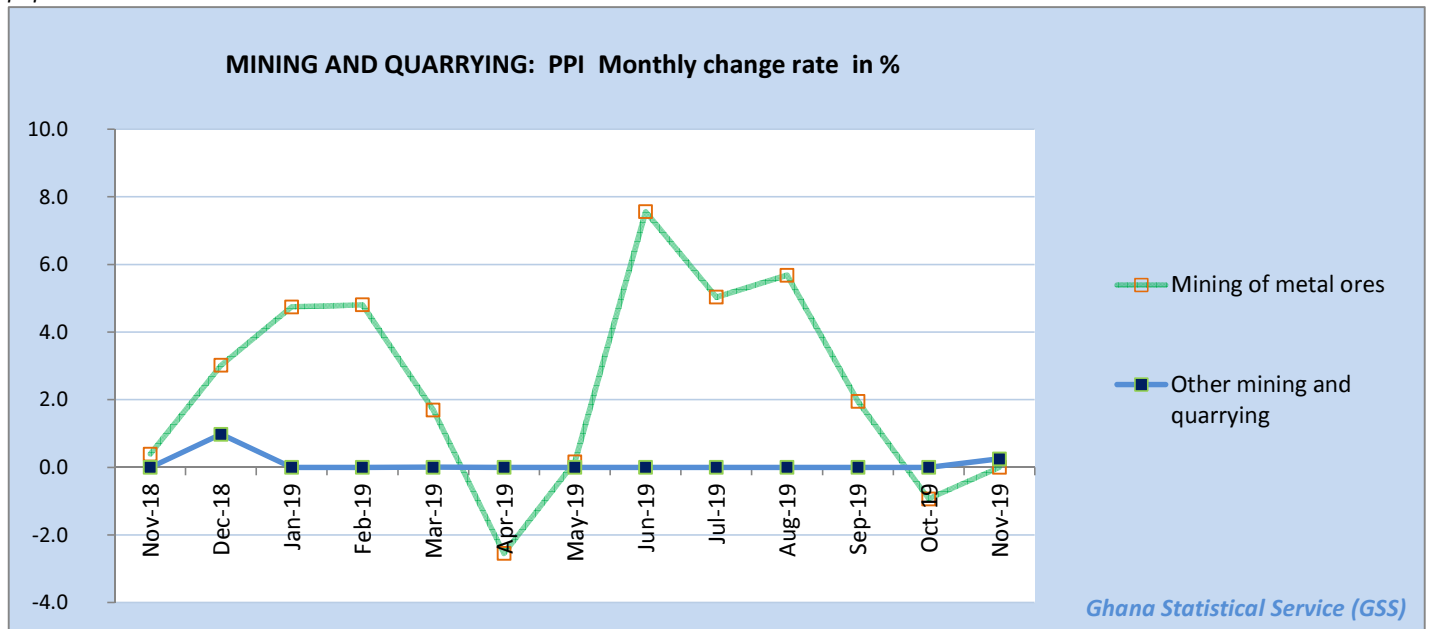
*p: provisional*



**Table 7: Mining and Quarrying: Monthly Change Rates for November 2018 - November 2019 (%)**

Year / Month	Mining and Quarrying	Mining of metal ores	Mining of non-ferrous metal ores	Other mining and quarrying	Quarrying of stone, sand & clay	Mining and quarrying n.e.c.
ISIC	C	C13	C132	C14	C141	C142
November-2018	0.4	0.4	0.4	0.0	0.0	0.0
December-2018	2.9	3.0	3.0	1.0	0.0	4.9
January-2019	4.6	4.7	4.7	0.0	0.0	0.0
February-2019	4.6	4.8	4.8	0.0	0.0	0.0
March-2019	1.6	1.7	1.7	0.0	0.0	0.0
April-2019	-2.5	-2.5	-2.5	0.0	0.0	0.0
May-2019	0.2	0.2	0.2	0.0	0.0	0.0
June-2019	7.3	7.6	7.6	0.0	0.0	0.0
July-2019	4.8	5.0	5.0	0.0	0.0	0.0
August-2019	5.5	5.7	5.7	0.0	0.0	0.0
September-2019	1.9	2.0	2.0	0.0	0.0	0.0
October-2019	-0.9	-0.9	-0.9	0.0	0.0	0.0
November-2019	p 0.0	p -0.0	p -0.0	p 0.2	p 0.3	p 0.0

*p: provisional*



**Table 8: Manufacturing Producer Price Index (Sept 2006=100) for November 2018 - November 2019**

Year / Month	<b>Manufacturing</b>	<b>Manufacture of food products and beverages</b>	Production, processing, preservation of meat, fish, fruit, vegetables, oils and fats	Manufacture of dairy products	Manufacture of grain mill products, starch products, and prepared animal feeds	Manufacture of other food products	Manufacture of beverages	<b>Manufacture of textiles</b>	Spinning, weaving and finishing of textiles
<i>ISIC</i>	<b>D</b>	<b>D15</b>	<i>D151</i>	<i>D152</i>	<i>D153</i>	<i>D154</i>	<i>D155</i>	<b>D17</b>	<i>D171</i>
<i>weight</i>	<b>100</b>	<b>25.64</b>	4.60	4.31	4.66	4.80	7.27	<b>4.27</b>	4.28
November-2018	491.4	442.5	615.2	357.2	543.4	571.7	365.0	599.6	599.6
December-2018	479.6	440.9	600.6	357.2	543.4	571.9	365.0	599.8	599.8
January-2019	476.4	445.6	638.2	357.2	543.4	579.4	365.0	600.4	600.4
February-2019	485.4	452.1	652.8	357.2	578.1	580.4	365.0	616.0	616.0
March-2019	492.7	464.4	664.2	387.6	578.1	581.7	365.0	617.2	617.2
April-2019	502.0	461.4	637.1	387.6	578.1	581.0	365.0	616.5	616.5
May-2019	503.6	465.4	642.0	387.6	578.1	581.1	375.2	616.8	616.8
June-2019	507.2	467.2	648.7	387.6	578.1	593.8	375.2	617.8	617.8
July-2019	508.7	467.2	648.3	387.6	578.1	594.3	375.2	617.6	617.6
August-2019	511.5	467.8	653.7	387.6	578.1	594.7	375.2	617.4	617.4
September-2019	505.7	469.4	667.7	387.6	578.1	595.7	375.2	617.3	617.3
October-2019	511.2	470.0	671.7	387.6	578.1	596.8	375.2	617.5	617.5
November-2019	p 513.7	p 474.5	p 711.1	p 387.6	p 580.3	p 598.8	p 375.2	p 618.0	p 618.0

*p: provisional*

**Table 8: Manufacturing Producer Price Index (Sept 2006=100) for November 2018 - November 2019**

*contd.*

Year / Month	Tanning of leather; manu facture of luggage, etc	Manufacture of footwear	Manufacture of wood an of articles of straw etc.	Sawmilling and planing of wood	Manufacture of products of wood, cork, straw etc.	Manufacture of paper and paper products	Manufacture of paper and paper products	Publishing, printing and reproduction of rec. media	Publishing	Printing and service activities ...
ISIC	D19	D192	D20	D201	D202	D21	D210	D22	D221	D222
weight	0.12	0.12	9.03	4.94	4.10	0.62	0.62	1.14	0.40	0.74
November-2018	533.9	533.9	354.7	376.2	300.3	539.0	539.0	780.6	665.2	851.8
December-2018	533.9	533.9	354.7	376.2	300.4	539.3	539.3	780.6	665.2	851.8
January-2019	533.9	533.9	354.8	376.2	300.8	540.2	540.2	780.6	665.2	851.8
February-2019	533.9	533.9	354.9	376.2	301.1	541.5	541.5	780.6	665.2	851.8
March-2019	533.9	533.9	355.1	376.2	301.5	543.2	543.2	780.6	665.2	851.8
April-2019	533.9	533.9	354.9	376.2	301.1	533.4	533.4	782.1	665.2	854.4
May-2019	533.9	533.9	354.9	376.2	301.1	557.9	557.9	782.1	665.2	854.4
June-2019	533.9	533.9	355.1	376.2	301.6	535.0	535.0	794.0	665.2	874.5
July-2019	533.9	533.9	355.1	376.2	301.7	561.6	561.6	794.0	665.2	874.5
August-2019	533.9	533.9	355.1	376.2	301.6	561.7	561.7	794.0	665.2	874.5
September-2019	533.9	533.9	355.1	376.2	301.7	562.0	562.0	794.0	665.2	874.5
October-2019	533.9	533.9	355.1	376.2	301.8	562.3	562.3	794.0	665.2	874.5
November-2019	p 544.9	p 544.9	p 357.4	p 376.2	p 309.3	p 563.0	p 563.0	p 794.0	p 665.2	p 874.5

*p: provisional*

**Table 8: Manufacturing Producer Price Index (Sept 2006=100) for November 2018 - November 2019**  
*contd.*

Year / Month	Manufacture of coke, refined petroleum products etc.	Manufacture of refined petroleum products	Manufacture of chemicals and chemical products	Manufacture of basic chemicals	Manufacture of other chemical products	Manufacture of man-made fibres	Manufacture of rubber and plastics products	Manufacture of rubber products	Manufacture of plastics products
ISIC	D23	D232	D24	D241	D242	D243	D25	D251	D252
weight	22.94	22.94	10.15	0.54	9.45	0.16	3.90	0.76	3.14
November-2018	549.6	549.6	464.0	411.3	474.8	128.8	424.3	318.7	451.0
December-2018	494.2	494.2	464.1	412.3	474.8	128.8	433.5	319.5	462.6
January-2019	472.6	472.6	464.1	415.8	474.8	128.8	434.5	322.5	462.9
February-2019	497.1	497.1	466.6	421.1	477.4	128.8	435.9	326.9	463.4
March-2019	510.3	510.3	469.5	428.0	480.3	128.8	438.5	332.9	464.9
April-2019	546.2	546.2	484.8	424.1	496.5	128.8	437.4	329.5	464.6
May-2019	547.6	547.6	484.8	425.0	496.5	128.8	437.7	330.3	464.7
June-2019	536.6	536.6	484.9	430.6	496.5	128.8	439.2	335.1	465.2
July-2019	533.8	533.8	490.5	431.2	502.4	128.8	439.3	335.7	465.2
August-2019	542.2	542.2	490.5	431.8	502.4	128.8	439.5	336.2	465.3
September-2019	514.1	514.1	490.5	433.1	502.4	128.8	439.8	337.3	465.4
October-2019	537.5	537.5	490.5	434.0	502.4	128.8	440.1	338.1	465.5
November-2019	p 540.0	p 540.0	p 490.5	p 436.8	p 502.4	p 128.8	p 440.1	p 337.3	p 465.7

*p: provisional*

**Table 8: Manufacturing Producer Price Index (Sept 2006=100) for November 2018 - November 2019**
*contd.*

Year / Month	Manufacture of other non-metallic min. products	Manufacture of non-metallic mineral products n.e.c.	Manufacture of basic metals	Manufacture of basic iron and steel	Manufacture of basic precious and non-ferrous metals	Manufacture of fabricated metal products, ...	Manufacture of structural metal products, tanks, reservoirs ...	Manufacture of other fabricated metal products ...	Manufacture of machinery ... n.e.c.	Manufacture of special-purpose machinery
<i>ISIC</i>	<b>D26</b>	<i>D269</i>	<b>D27</b>	<i>D271</i>	<i>D272</i>	<b>D28</b>	<i>D281</i>	<i>D289</i>	<b>D29</b>	<i>D292</i>
<i>weight</i>	<b>8.20</b>	8.20	<b>5.02</b>	2.02	2.65	<b>3.70</b>	1.55	2.15	<b>0.42</b>	0.42
November-2018	497.5	497.5	489.5	585.4	427.2	670.5	553.5	769.9	1065.3	1065.3
December-2018	497.8	497.8	490.1	585.5	428.0	675.0	556.0	776.2	1065.3	1065.3
January-2019	498.3	498.3	491.9	586.0	430.5	675.0	556.0	776.3	1065.3	1065.3
February-2019	498.4	498.4	494.7	586.8	434.4	677.7	556.0	781.7	1065.3	1065.3
March-2019	498.7	498.7	498.4	587.8	439.5	677.8	556.0	781.9	1065.3	1065.3
April-2019	498.7	498.7	517.8	587.3	470.5	677.8	556.0	781.8	1065.3	1065.3
May-2019	498.2	498.2	517.5	587.3	470.0	677.8	556.0	781.8	1065.3	1065.3
June-2019	538.2	538.2	521.3	588.2	475.6	692.9	556.0	812.0	1328.8	1328.8
July-2019	547.4	547.4	524.7	598.2	474.8	697.4	556.0	821.0	1328.8	1328.8
August-2019	547.2	547.2	525.0	598.2	475.3	727.1	556.0	881.3	1328.8	1328.8
September-2019	547.4	547.4	525.6	598.2	476.3	727.4	556.0	882.0	1328.8	1328.8
October-2019	547.5	547.5	526.1	598.4	477.0	727.9	556.0	883.1	1328.8	1328.8
November-2019	p 547.9	p 547.9	p 527.6	p 598.8	p 479.2	p 737.4	p 572.0	p 886.4	p 1328.8	p 1328.8

*p: provisional*

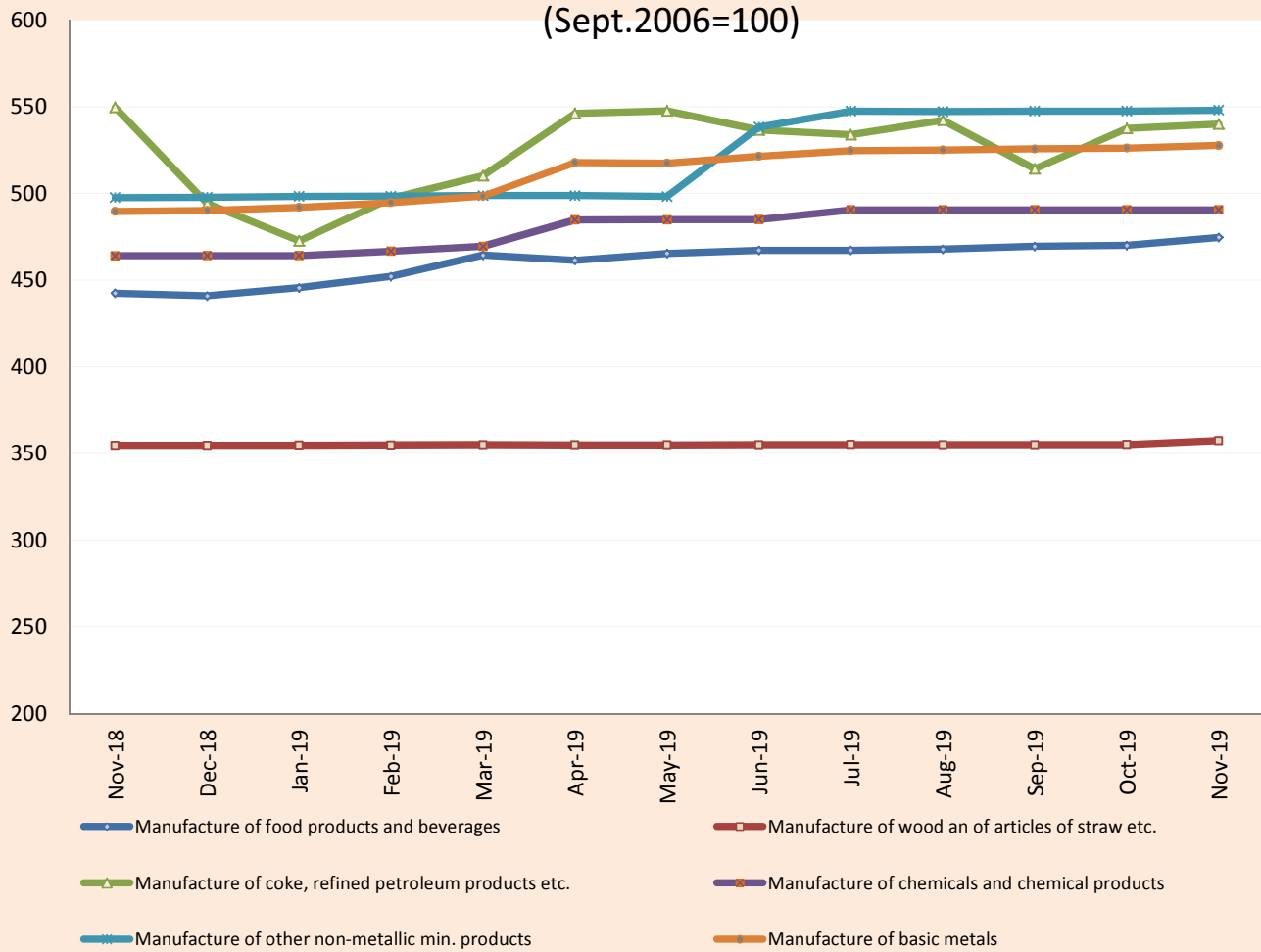


**Table 8: Manufacturing Producer Price Index (Sept 2006=100) for November 2018 - November 2019**  
*contd.*

Year / Month	Manufacture of electrical machinery and apparatus n.e.c.	Manufacture of insulated wire and cable	Manufacture of motor vehicles, trailers and semi-trailers	Manufacture of bodies for motor vehicles, trailers and semi-trailers	Manufacture of furniture; manufacturing n.e.c.	Manufacture of furniture	Manufacturing n.e.c.
<i>ISIC</i>	<b>D31</b>	<i>D313</i>	<b>D34</b>	<i>D342</i>	<b>D36</b>	<i>D361</i>	<i>D369</i>
<i>weight</i>	<b>0.41</b>	<i>0.41</i>	<b>0.05</b>	<i>0.05</i>	<b>2.44</b>	<i>2.33</i>	<i>0.11</i>
November-2018	387.2	387.2	532.3	532.3	688.0	684.9	804.3
December-2018	387.2	387.2	535.7	535.7	688.3	684.9	814.9
January-2019	387.2	387.2	546.0	546.0	698.9	695.7	818.1
February-2019	387.3	387.3	556.2	556.2	724.7	722.1	818.1
March-2019	387.4	387.4	572.1	572.1	726.6	724.1	818.1
April-2019	387.3	387.3	558.5	558.5	727.4	724.9	818.1
May-2019	387.3	387.3	558.6	558.6	727.4	724.9	818.1
June-2019	387.4	387.4	578.6	578.6	727.4	724.9	818.1
July-2019	387.4	387.4	576.1	576.1	727.0	724.5	818.1
August-2019	387.4	387.4	572.6	572.6	727.4	724.9	818.1
September-2019	387.5	387.5	571.4	571.4	727.4	724.9	818.1
October-2019	387.5	387.5	574.6	574.6	727.4	724.9	818.1
November-2019	p 387.5	p 387.5	p 581.8	p 581.8	p 727.4	p 724.9	p 818.1

*p: provisional*

### PPI for Selected Subgroups in the Manufacturing Sector (Sept.2006=100)



*Ghana Statistical Service (GSS)*

**Table 9: Manufacturing: Yearly Change Rates for November 2018 - November 2019 (%)**

Year / Month	<b>Manufacturing</b>	<b>Manufacture of food products and beverages</b>	Production, processing, preservation of meat, fish, fruit, vegetables, oils and fats	Manufacture of dairy products	Manufacture of grain mill products, starch products, and prepared animal feeds	Manufacture of other food products	Manufacture of beverages	<b>Manufacture of textiles</b>	Spinning, weaving and finishing of textiles
<i>ISIC</i>	<b>D</b>	<b>D15</b>	D151	D152	D153	D154	D155	<b>D17</b>	D171
<i>weight</i>	<b>100</b>	<b>25.64</b>	4.60	4.31	4.66	4.80	7.27	<b>4.27</b>	4.28
November-2018	8.6	1.6	1.3	0.0	1.8	7.8	0.9	11.8	11.8
December-2018	4.5	1.3	-0.7	0.0	1.8	7.8	0.9	11.8	11.8
January-2019	3.0	2.4	5.4	0.0	1.8	9.2	0.9	4.6	4.6
February-2019	5.0	4.0	8.9	0.0	8.3	9.4	0.9	7.3	7.3
March-2019	6.8	6.7	11.1	8.5	8.3	7.9	0.9	7.4	7.4
April-2019	7.5	5.8	6.4	8.5	8.3	6.7	0.9	7.1	7.1
May-2019	6.2	7.1	9.3	8.5	8.3	6.7	3.7	6.3	6.3
June-2019	5.3	7.2	8.7	8.5	8.3	8.9	3.7	6.4	6.4
July-2019	5.4	6.3	4.7	8.5	8.3	8.5	2.8	3.0	3.0
August-2019	5.8	6.7	7.5	8.5	8.3	8.5	2.8	2.9	2.9
September-2019	4.1	6.1	8.6	8.5	6.4	4.2	2.8	3.0	3.0
October-2019	3.1	6.1	8.5	8.5	6.4	4.4	2.8	3.0	3.0
November-2019	p 4.5	p 7.2	p 15.6	p 8.5	p 6.8	p 4.7	p 2.8	p 3.1	p 3.1

*p: provisional*

**Table 9: Manufacturing Producer Price Index Yearly Change Rates for November 2018 - November 2019 (%)**

*contd.*

Year / Month	Tanning of leather; manufacture of luggage, etc	Manufacture of footwear	Manufacture of wood and of articles of straw etc.	Sawmilling and planing of wood	Manufacture of products of wood, cork, straw etc.	Manufacture of paper and paper products	Manufacture of paper and paper products	Publishing, printing and reproduction of rec. media	Publishing	Printing and service activities ...
<i>ISIC</i>	<b>D19</b>	<i>D192</i>	<b>D20</b>	<i>D201</i>	<i>D202</i>	<b>D21</b>	<i>D210</i>	<b>D22</b>	<i>D221</i>	<i>D222</i>
<i>weight</i>	<b>0.12</b>	<i>0.12</i>	<b>9.03</b>	<i>4.94</i>	<i>4.10</i>	<b>0.62</b>	<i>0.62</i>	<b>1.14</b>	<i>0.40</i>	<i>0.74</i>
November-2018	0.0	0.0	0.9	1.5	0.7	1.0	1.0	3.2	0.0	4.9
December-2018	0.0	0.0	0.1	0.0	0.2	1.1	1.1	3.2	0.0	4.9
January-2019	0.0	0.0	0.0	0.0	0.1	1.2	1.2	2.7	0.0	4.2
February-2019	0.0	0.0	0.1	0.0	0.3	1.4	1.4	2.7	0.0	4.2
March-2019	0.0	0.0	0.1	0.0	0.5	1.8	1.8	2.7	0.0	4.2
April-2019	0.0	0.0	0.1	0.0	0.4	0.0	0.0	0.2	0.0	0.3
May-2019	0.0	0.0	0.2	0.0	0.6	4.5	4.5	0.2	0.0	0.3
June-2019	0.0	0.0	0.2	0.0	0.7	0.1	0.1	1.7	0.0	2.7
July-2019	0.0	0.0	0.1	0.0	0.5	4.5	4.5	1.7	0.0	2.7
August-2019	0.0	0.0	0.1	0.0	0.4	4.4	4.4	1.7	0.0	2.7
September-2019	0.0	0.0	0.1	0.0	0.5	4.3	4.3	1.7	0.0	2.7
October-2019	0.0	0.0	0.1	0.0	0.4	4.3	4.3	1.7	0.0	2.7
November-2019	p 2.1	p 2.1	p 0.8	p 0.0	p 3.0	p 4.4	p 4.4	p 1.7	p 0.0	p 2.7

*p: provisional*

**Table 9: Manufacturing: Yearly Change Rates for November 2018 - November 2019 (%)**

*contd.*

Year / Month	Manufacture of coke, refined petroleum products etc.	Manufacture of refined petroleum products	Manufacture of chemicals and chemical products	Manufacture of basic chemicals	Manufacture of other chemical products	Manufacture of man-made fibres	Manufacture of rubber and plastic products	Manufacture of rubber products	Manufacture of plastics products
<i>ISIC</i>	<b>D23</b>	D232	<b>D24</b>	D241	D242	D243	<b>D25</b>	D251	D252
<i>weight</i>	<b>22.94</b>	22.94	<b>10.15</b>	0.54	9.45	0.16	<b>3.90</b>	0.76	3.14
November-2018	30.6	30.6	0.8	4.8	0.7	0.0	0.0	-1.2	0.3
December-2018	10.1	10.1	0.8	5.1	0.7	0.0	2.3	-0.1	2.8
January-2019	3.8	3.8	0.1	5.5	0.1	0.0	0.7	-9.0	2.9
February-2019	8.9	8.9	0.7	6.8	0.6	0.0	2.5	0.3	3.0
March-2019	13.0	13.0	1.3	8.6	1.2	0.0	3.1	2.2	3.3
April-2019	17.2	17.2	4.6	7.6	4.6	0.0	3.7	5.6	3.3
May-2019	9.9	9.9	4.6	7.7	4.6	0.0	3.9	7.2	3.3
June-2019	1.2	1.2	4.5	8.5	4.6	0.0	5.1	13.9	3.3
July-2019	2.1	2.1	5.7	6.5	5.8	0.0	4.0	7.2	3.3
August-2019	3.1	3.1	5.7	5.9	5.8	0.0	3.9	7.3	3.2
September-2019	-2.7	-2.7	5.7	5.7	5.8	0.0	3.7	6.3	3.2
October-2019	-5.7	-5.7	5.7	5.5	5.8	0.0	3.7	6.1	3.2
November-2019	-p 1.7	-p 1.7	p 5.7	p 6.2	p 5.8	p 0.0	p 3.7	p 5.9	p 3.3

*p: provisional*

**Table 9: Manufacturing: Yearly Change Rates for November 2018 - November 2019 (%)**

*contd.*

Year / Month	Manufacture of other non-metallic min. products	Manufacture of non-metallic mineral products n.e.c.	Manufacture of basic metals	Manufacture of basic iron and steel	Manufacture of basic precious and non-ferrous metals	Manufacture of fabricated metal products, ...	Manufacture of structural metal products, tanks, reservoirs ...	Manufacture of other fabricated metal products ...	Manufacture of machinery ... n.e.c.	Manufacture of special-purpose machinery
<i>ISIC</i>	<b>D26</b>	D269	<b>D27</b>	D271	D272	<b>D28</b>	D281	D289	<b>D29</b>	D292
<i>weight</i>	<b>8.20</b>	8.20	<b>5.02</b>	2.02	2.65	<b>3.70</b>	1.55	2.15	<b>0.42</b>	0.42
November-2018	1.7	1.7	16.4	32.7	5.3	0.5	0.4	0.7	0.0	0.0
December-2018	3.1	3.1	16.4	32.8	5.4	1.6	0.8	2.2	0.0	0.0
January-2019	2.7	2.7	16.8	32.9	5.9	1.6	0.8	2.2	0.0	0.0
February-2019	2.7	2.7	16.1	33.1	4.7	2.0	0.8	2.8	0.0	0.0
March-2019	2.8	2.8	17.0	33.3	6.0	2.0	0.8	2.8	0.0	0.0
April-2019	2.7	2.7	10.8	7.4	13.5	2.0	0.8	2.8	0.0	0.0
May-2019	2.7	2.7	10.7	7.3	13.3	2.0	0.8	2.8	0.0	0.0
June-2019	10.8	10.8	10.9	6.6	14.2	4.3	0.8	6.8	24.7	24.7
July-2019	13.4	13.4	7.6	1.5	12.4	4.7	0.4	7.9	24.7	24.7
August-2019	12.4	12.4	7.3	1.5	12.0	9.2	0.4	15.9	24.7	24.7
September-2019	12.1	12.1	7.6	2.2	11.8	8.5	0.4	14.6	24.7	24.7
October-2019	10.0	10.0	7.5	2.2	11.7	8.6	0.4	14.8	24.7	24.7
November-2019	p 10.1	p 10.1	p 7.8	p 2.3	p 12.2	p 10.0	p 3.3	p 15.1	p 24.7	p 24.7

*p: provisional*

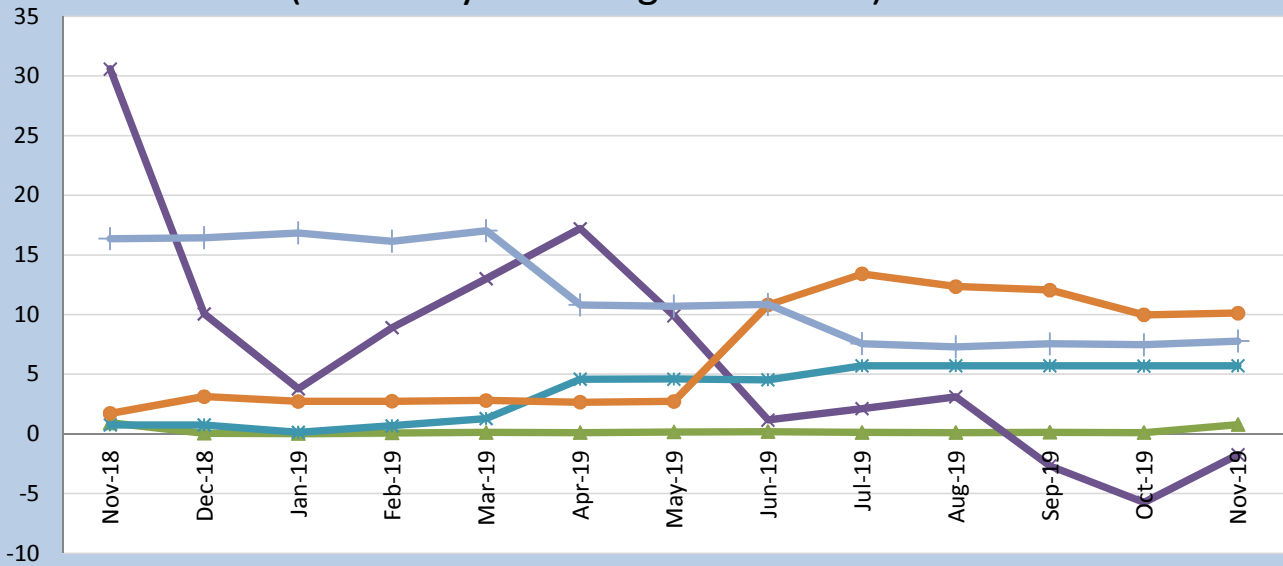
**Table 9: Manufacturing: Yearly Change Rates for November 2018 - November 2019 (%)**

*contd.*

Year / Month	Manufacture of electrical machinery and apparatus n.e.c.	Manufacture of insulated wire and cable	Manufacture of motor vehicles, trailers and semi-trailers	Manufacture of bodies for motor vehicles, trailers and semi-trailers	Manufacture of furniture; manufacturing n.e.c.	Manufacture of furniture	Manufacturing n.e.c.
<i>ISIC</i>	<b>D31</b>	D313	<b>D34</b>	D342	<b>D36</b>	D361	D369
<i>weight</i>	<b>0.41</b>	0.41	<b>0.05</b>	0.05	<b>2.44</b>	2.33	0.11
November-2018	1.1	1.1	6.7	6.7	3.7	3.8	1.0
December-2018	1.1	1.1	6.2	6.2	2.8	2.9	1.3
January-2019	0.1	0.1	4.7	4.7	4.3	4.4	1.7
February-2019	0.1	0.1	8.0	8.0	8.1	8.3	1.7
March-2019	0.1	0.1	8.7	8.7	8.4	8.6	1.7
April-2019	0.1	0.1	6.9	6.9	8.5	8.8	1.7
May-2019	0.1	0.1	10.9	10.9	8.5	8.8	1.7
June-2019	0.1	0.1	13.6	13.6	8.5	8.8	1.7
July-2019	0.1	0.1	8.4	8.4	8.4	8.6	1.7
August-2019	0.1	0.1	7.7	7.7	8.4	8.6	1.7
September-2019	0.1	0.1	7.9	7.9	5.7	5.8	1.7
October-2019	0.1	0.1	6.8	6.8	5.7	5.8	1.7
November-2019	p 0.1	p 0.1	p 9.3	p 9.3	p 5.7	p 5.8	p 1.7

*p: provisional*

## PPI Inflation for selected subgroups in the Manufacturing Sector (Year-on-year change rates in %)



- ▲ Manufacture of wood and of articles of straw etc.
- ✕ Manufacture of coke, refined petroleum products etc.
- ✕ Manufacture of chemicals and chemical products
- Manufacture of other non-metallic min. products
- Manufacture of basic metals

*Ghana Statistical Service (GSS)*



**Table 10: Manufacturing: Monthly Change Rates for November 2018 - November 2019 (%)**

Year / Month	Manufacturing	Manufacture of food products and beverages	Production, processing, preservation of meat, fish, fruit, vegetables, oils and fats	Manufacture of dairy products	Manufacture of grain mill products, starch products, and prepared animal feeds	Manufacture of other food products	Manufacture of beverages	Manufacture of textiles	Spinning, weaving and finishing of textiles
<i>ISIC</i>	<i>D</i>	<i>D15</i>	<i>D151</i>	<i>D152</i>	<i>D153</i>	<i>D154</i>	<i>D155</i>	<i>D17</i>	<i>D171</i>
<i>weight</i>	<b>100</b>	<b>25.64</b>	4.60	4.31	4.66	4.80	7.27	<b>4.27</b>	4.28
October-2018	2.1	0.1	0.7	0.0	0.0	0.1	0.0	0.0	0.0
November-2018	-0.9	-0.1	-0.6	0.0	0.0	0.0	0.0	0.0	0.0
December-2018	-2.4	-0.4	-2.4	0.0	0.0	0.0	0.0	0.0	0.0
January-2019	-0.7	1.1	6.3	0.0	0.0	1.3	0.0	0.1	0.1
February-2019	1.9	1.5	2.3	0.0	6.4	0.2	0.0	2.6	2.6
March-2019	1.5	2.7	1.7	8.5	0.0	0.2	0.0	0.2	0.2
April-2019	1.9	-0.6	-4.1	0.0	0.0	-0.1	0.0	-0.1	-0.1
May-2019	0.3	0.9	0.8	0.0	0.0	0.0	2.8	0.1	0.1
June-2019	0.7	0.4	1.0	0.0	0.0	2.2	0.0	0.2	0.2
July-2019	0.3	0.0	-0.1	0.0	0.0	0.1	0.0	0.0	0.0
August-2019	0.6	0.1	0.8	0.0	0.0	0.1	0.0	0.0	0.0
September-2019	-1.1	0.3	2.1	0.0	0.0	0.2	0.0	0.0	0.0
October-2019	p 1.1	p 0.1	p 0.6	p 0.0	p 0.0	p 0.2	p 0.0	p 0.0	p 0.0

*p: provisional*

**Table 10: Manufacturing: Monthly Change Rates for November 2018 - November 2019 (%)**

*contd.*

Year / Month	Tanning of leather; manu facture of luggage, etc	Manufacture of footwear	Manufacture of wood an of articles of straw etc.	Sawmilling and planing of wood	Manufacture of products of wood, cork, straw etc.	Manufacture of paper and paper products	Manufacture of paper and paper products	Publishing, printing and reproduction of rec. media	Publishing	Printing and service activities ...
<i>ISIC</i>	<b>D19</b>	<i>D192</i>	<b>D20</b>	<i>D201</i>	<i>D202</i>	<b>D21</b>	<i>D210</i>	<b>D22</b>	<i>D221</i>	<i>D222</i>
<i>weight</i>	<b>0.12</b>	<i>0.12</i>	<b>9.03</b>	<i>4.94</i>	<i>4.10</i>	<b>0.62</b>	<i>0.62</i>	<b>1.14</b>	<i>0.40</i>	<i>0.74</i>
October-2018	0.0	0.0	0.0	0.0	0.1	0.1	0.1	0.0	0.0	0.0
November-2018	0.0	0.0	0.0	0.0	-0.1	0.0	0.0	0.0	0.0	0.0
December-2018	0.0	0.0	0.0	0.0	0.0	0.0	0.0	0.0	0.0	0.0
January-2019	0.0	0.0	0.0	0.0	0.1	0.2	0.2	0.0	0.0	0.0
February-2019	0.0	0.0	0.0	0.0	0.1	0.2	0.2	0.0	0.0	0.0
March-2019	0.0	0.0	0.0	0.0	0.2	0.3	0.3	0.0	0.0	0.0
April-2019	0.0	0.0	0.0	0.0	-0.1	-1.8	-1.8	0.2	0.0	0.3
May-2019	0.0	0.0	0.0	0.0	0.0	4.6	4.6	0.0	0.0	0.0
June-2019	0.0	0.0	0.0	0.0	0.2	-4.1	-4.1	1.5	0.0	2.4
July-2019	0.0	0.0	0.0	0.0	0.0	5.0	5.0	0.0	0.0	0.0
August-2019	0.0	0.0	0.0	0.0	0.0	0.0	0.0	0.0	0.0	0.0
September-2019	0.0	0.0	0.0	0.0	0.0	0.1	0.1	0.0	0.0	0.0
October-2019	p 0.0	p 0.0	p 0.0	p 0.0	p 0.0	p 0.0	p 0.0	p 0.0	p 0.0	p 0.0

*p: provisional*

**Table 10: Manufacturing: Monthly Change Rates for November 2018 - November 2019 (%)**

*contd.*

Year / Month	Manufacture of coke, refined petroleum products etc.	Manufacture of refined petroleum products	Manufacture of chemicals and chemical products	Manufacture of basic chemicals	Manufacture of other chemical products	Manufacture of man-made fibres	Manufacture of rubber and plastics products	Manufacture of rubber products	Manufacture of plastics products
<i>ISIC</i>	<b>D23</b>	<i>D232</i>	<b>D24</b>	<i>D241</i>	<i>D242</i>	<i>D243</i>	<b>D25</b>	<i>D251</i>	<i>D252</i>
<i>weight</i>	<b>22.94</b>	<i>22.94</i>	<b>10.15</b>	<i>0.54</i>	<i>9.45</i>	<i>0.16</i>	<b>3.90</b>	<i>0.76</i>	<i>3.14</i>
October-2018	7.9	7.9	0.0	0.4	0.0	0.0	0.1	0.4	0.0
November-2018	-3.6	-3.6	0.0	0.0	0.0	0.0	0.0	0.0	0.0
December-2018	-10.1	-10.1	0.0	0.3	0.0	0.0	2.2	0.3	2.6
January-2019	-4.4	-4.4	0.0	0.8	0.0	0.0	0.2	0.9	0.1
February-2019	5.2	5.2	0.5	1.3	0.5	0.0	0.3	1.4	0.1
March-2019	2.6	2.6	0.6	1.7	0.6	0.0	0.6	1.8	0.3
April-2019	7.0	7.0	3.3	-0.9	3.4	0.0	-0.2	-1.0	-0.1
May-2019	0.3	0.3	0.0	0.2	0.0	0.0	0.1	0.2	0.0
June-2019	-2.0	-2.0	0.0	1.3	0.0	0.0	0.3	1.5	0.1
July-2019	-0.5	-0.5	1.2	0.2	1.2	0.0	0.0	0.2	0.0
August-2019	1.6	1.6	0.0	0.1	0.0	0.0	0.0	0.2	0.0
September-2019	-5.2	-5.2	0.0	0.3	0.0	0.0	0.1	0.3	0.0
October-2019	p 4.6	p 4.6	p 0.0	p 0.2	p 0.0	p 0.0	p 0.1	p 0.2	p 0.0

*p: provisional*

**Table 10: Manufacturing: Monthly Change Rates for November 2018 - November 2019 (%)**

*contd.*

Year / Month	Manufacture of other non-metallic min. products	Manufacture of non-metallic mineral products n.e.c.	Manufacture of basic metals	Manufacture of basic iron and steel	Manufacture of basic precious and non-ferrous metals	Manufacture of fabricated metal products, ...	Manufacture of structural metal products, tanks, reservoirs ...	Manufacture of other fabricated metal products ...	Manufacture of machinery ... n.e.c.	Manufacture of special-purpose machinery
<i>ISIC</i>	<b>D26</b>	<i>D269</i>	<b>D27</b>	<i>D271</i>	<i>D272</i>	<b>D28</b>	<i>D281</i>	<i>D289</i>	<b>D29</b>	<i>D292</i>
<i>weight</i>	<b>8.20</b>	8.20	<b>5.02</b>	2.02	2.65	<b>3.70</b>	1.55	2.15	<b>0.42</b>	0.42
October-2018	1.9	1.9	0.2	0.0	0.3	0.0	0.0	0.0	0.0	0.0
November-2018	-0.1	-0.1	0.0	0.0	0.0	0.0	0.0	0.0	0.0	0.0
December-2018	0.1	0.1	0.1	0.0	0.2	0.7	0.4	0.8	0.0	0.0
January-2019	0.1	0.1	0.4	0.1	0.6	0.0	0.0	0.0	0.0	0.0
February-2019	0.0	0.0	0.6	0.1	0.9	0.4	0.0	0.7	0.0	0.0
March-2019	0.1	0.1	0.7	0.2	1.2	0.0	0.0	0.0	0.0	0.0
April-2019	0.0	0.0	3.9	-0.1	7.1	0.0	0.0	0.0	0.0	0.0
May-2019	-0.1	-0.1	-0.1	0.0	-0.1	0.0	0.0	0.0	0.0	0.0
June-2019	8.0	8.0	0.7	0.2	1.2	2.2	0.0	3.9	24.7	24.7
July-2019	1.7	1.7	0.6	1.7	-0.2	0.6	0.0	1.1	0.0	0.0
August-2019	0.0	0.0	0.1	0.0	0.1	4.3	0.0	7.3	0.0	0.0
September-2019	0.0	0.0	0.1	0.0	0.2	0.0	0.0	0.1	0.0	0.0
October-2019	p 0.0	p 0.0	p 0.1	p 0.0	p 0.1	p 0.1	p 0.0	p 0.1	p 0.0	p 0.0

*p: provisional*

**Table 10: Manufacturing: Monthly Change Rates for November 2018 - November 2019 (%)**

*contd.*

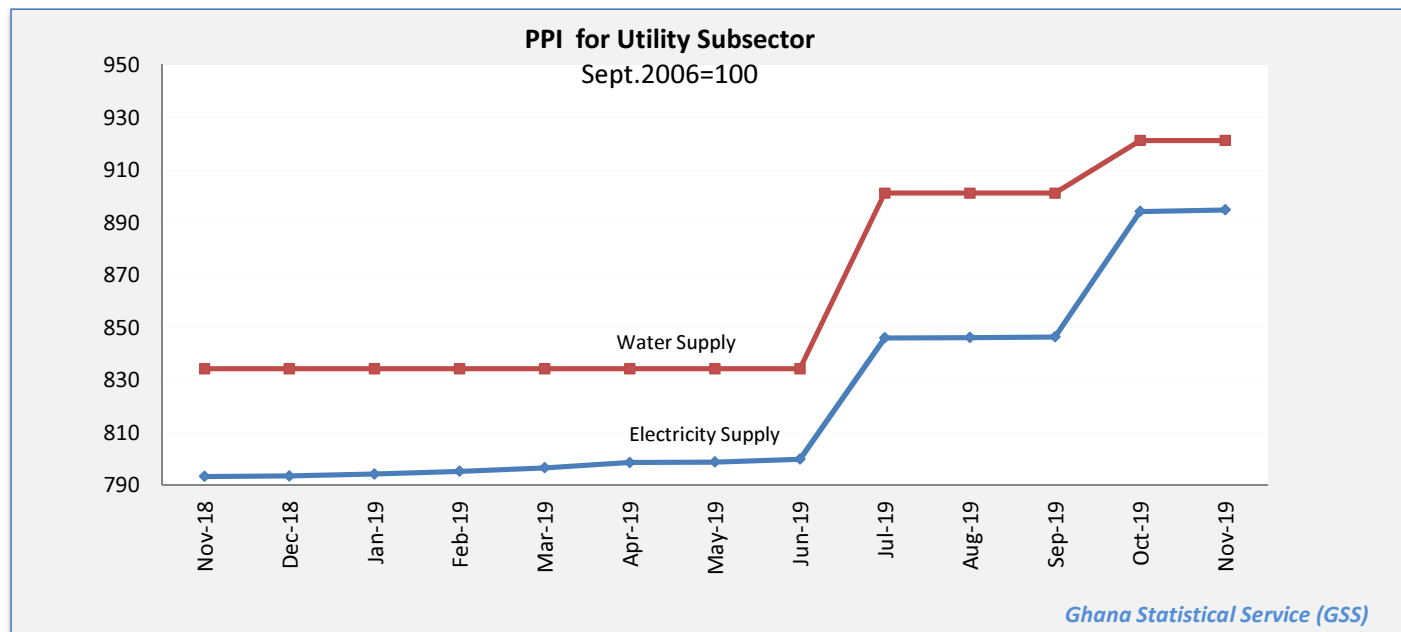
Year / Month	Manufacture of electrical machinery and apparatus n.e.c.	Manufacture of insulated wire and cable	Manufacture of motor vehicles, trailers and semi-trailers	Manufacture of bodies for motor vehicles, trailers and semi-trailers	Manufacture of furniture; manufacturing n.e.c.	Manufacture of furniture	Manufacturing n.e.c.
<i>ISIC</i>	<b>D31</b>	<i>D313</i>	<b>D34</b>	<i>D342</i>	<b>D36</b>	<i>D361</i>	<i>D369</i>
<i>weight</i>	<b>0.41</b>	<i>0.41</i>	<b>0.05</b>	<i>0.05</i>	<b>2.44</b>	<i>2.33</i>	<i>0.11</i>
October-2018	0.0	0.0	1.6	1.6	0.0	0.0	0.0
November-2018	0.0	0.0	-1.0	-1.0	0.0	0.0	0.0
December-2018	0.0	0.0	0.6	0.6	0.0	0.0	1.3
January-2019	0.0	0.0	1.9	1.9	1.5	1.6	0.4
February-2019	0.0	0.0	1.9	1.9	3.7	3.8	0.0
March-2019	0.0	0.0	2.9	2.9	0.3	0.3	0.0
April-2019	0.0	0.0	-2.4	-2.4	0.1	0.1	0.0
May-2019	0.0	0.0	0.0	0.0	0.0	0.0	0.0
June-2019	0.0	0.0	3.6	3.6	0.0	0.0	0.0
July-2019	0.0	0.0	-0.4	-0.4	-0.1	-0.1	0.0
August-2019	0.0	0.0	-0.6	-0.6	0.1	0.1	0.0
September-2019	0.0	0.0	-0.2	-0.2	0.0	0.0	0.0
October-2019	p 0.0	p 0.0	p 0.6	p 0.6	p 0.0	p 0.0	p 0.0

*p: provisional*

**Table 11: Utilities: Producer Price Index (Sept 2006=100) for November 2018 - November 2019**

Year / Month	Electricity and water supply (Utilities)	Electricity supply	Production, transmission and distribution of electricity	Water supply	Collection, purification and distribution of water
<i>ISIC</i>	<i>E</i>	<i>E40</i>	<i>E401</i>	<i>E41</i>	<i>E410</i>
<i>weight</i>	<b>100.00</b>	<b>93.25</b>	93.25	<b>6.75</b>	6.75
November-2018	796.0	793.4	793.4	834.4	834.4
December-2018	796.2	793.6	793.6	834.4	834.4
January-2019	796.9	794.3	794.3	834.4	834.4
February-2019	797.9	795.3	795.3	834.4	834.4
March-2019	799.1	796.7	796.7	834.4	834.4
April-2019	801.0	798.7	798.7	834.4	834.4
May-2019	801.2	798.9	798.9	834.4	834.4
June-2019	802.2	800.0	800.0	834.4	834.4
July-2019	849.6	846.1	846.1	901.2	901.2
August-2019	849.7	846.2	846.2	901.2	901.2
September-2019	850.0	846.5	846.5	901.2	901.2
October-2019	896.0	894.2	894.2	921.2	921.2
November-2019	p 896.5	p 894.8	p 894.8	p 921.2	p 921.2

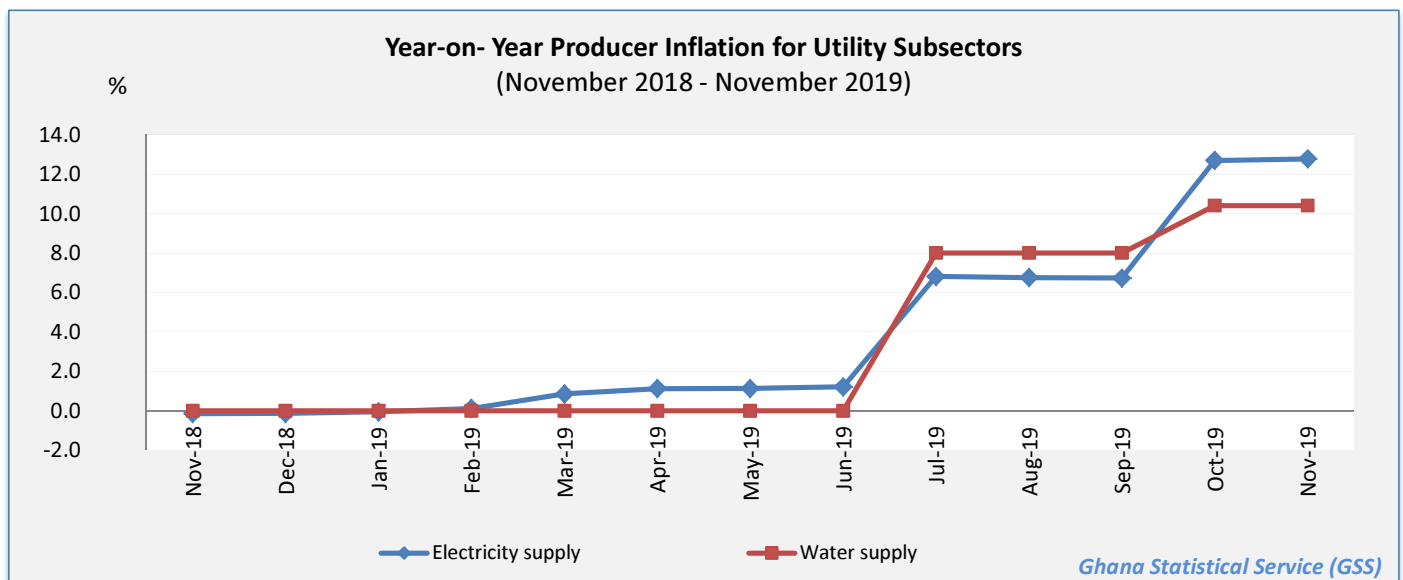
*p: provisional*



**Table 12: Utilities: Yearly Change Rates for November 2018 - November 2019 (%)**

Year / Month	Electricity and water supply (Utilities)	Electricity supply	Production, transmission and distribution of electricity	Water supply	Collection, purification and distribution of water
<i>ISIC</i>	<i>E</i>	<i>E40</i>	<i>E401</i>	<i>E41</i>	<i>E410</i>
<i>weight</i>	<b>100.00</b>	<b>93.25</b>	<b>93.25</b>	<b>6.75</b>	<b>6.75</b>
November-2018	-0.1	-0.1	-0.1	0.0	0.0
December-2018	-0.1	-0.1	-0.1	0.0	0.0
January-2019	0.0	-0.1	-0.1	0.0	0.0
February-2019	0.1	0.1	0.1	0.0	0.0
March-2019	0.8	0.9	0.9	0.0	0.0
April-2019	1.0	1.1	1.1	0.0	0.0
May-2019	1.1	1.1	1.1	0.0	0.0
June-2019	1.1	1.2	1.2	0.0	0.0
July-2019	6.9	6.8	6.8	8.0	8.0
August-2019	6.8	6.8	6.8	8.0	8.0
September-2019	6.8	6.7	6.7	8.0	8.0
October-2019	12.6	12.7	12.7	10.4	10.4
November-2019	p 12.6	p 12.8	p 12.8	p 10.4	p 10.4

*p: provisional*



**Table 13: Utilities: Monthly Change Rates for November 2018 - November 2019 (%)**

Year / Month	Electricity and water supply (Utilities)	Electricity supply	Production, transmission and distribution of electricity	Water supply	Collection, purification and distribution of water
<i>ISIC</i>	<i>E</i>	<i>E40</i>	<i>E401</i>	<i>E41</i>	<i>E410</i>
<i>weight</i>	<b>100.00</b>	<b>93.25</b>	<b>93.25</b>	<b>6.75</b>	<b>6.75</b>
November-2018	0.0	0.0	0.0	0.0	0.0
December-2018	0.0	0.0	0.0	0.0	0.0
January-2019	0.1	0.1	0.1	0.0	0.0
February-2019	0.1	0.1	0.1	0.0	0.0
March-2019	0.2	0.2	0.2	0.0	0.0
April-2019	0.2	0.3	0.3	0.0	0.0
May-2019	0.0	0.0	0.0	0.0	0.0
June-2019	0.1	0.1	0.1	0.0	0.0
July-2019	5.9	5.8	5.8	8.0	8.0
August-2019	0.0	0.0	0.0	0.0	0.0
September-2019	0.0	0.0	0.0	0.0	0.0
October-2019	5.4	5.6	5.6	2.2	2.2
November-2019	p 0.1	p 0.1	p 0.1	p 0.0	p 0.0

*p: provisional*

